

29er TuneUp Regatta Denmark 2021

The Royal Danish Yacht Club

5.-6. June 2021

SAILING INSTRUCTIONS (SIs)

The notation '[NP]' in a rule of the sailing instructions (SIs) means that a boat may not protest another boat for breaking that rule. This changes RRS 60.1(a).

The notation '[DP]' in a rule of the SI and the NoR means that the penalty for a breach of that rule may, at the discretion of the protest committee, be less than disqualification.

Organizing authority: The Royal Danish Yacht Club

1 RULES

- 1.1 The event is governed by the rules as defined in *The Racing Rules of Sailing* including the applying prescriptions (See SI Addendum I) of the Nordic Sailing Federation and the Danish Sailing Association national.

2 CHANGES TO SAILING INSTRUCTIONS

- 2.1 Any change to the sailing instructions will be posted before 0900 on the day it will take effect, except that any change to the schedule of races will be posted by 2000 on the day before it will take effect.

3 COMMUNICATIONS WITH COMPETITORS

- 3.1 Notices to competitors will be posted on the official notice board located at the club house.
- 3.2 The race office is located at KDY club house, Rungsted Harbour, telephone +45 29649113, email amm@kdy.dk.

3.3 [DP] While racing, except in an emergency, a boat shall not make voice or data transmissions and shall not receive voice or data communication that is not available to all boats.

4 CODE OF CONDUCT

4.1 [DP] Competitors and support persons shall comply with reasonable requests from race officials.

4.2 [DP] Competitors and support persons shall place advertising provided by the organizing authority with care, seamanship, in accordance with any instructions for its use and without interfering with its functionality.

5 SIGNALS MADE ASHORE

5.1 Signals made ashore will be displayed at the flag pole east of the club house.

5.2 When flag AP is displayed ashore, '1 minute' is replaced with 'not less than 30 minutes' in Race Signals AP.

6 SCHEDULE OF RACES

6.1 Race schedule:

Day	Schedule	First warning	Maximum races per day
June 5 th	3-5 races scheduled	11:00	6
June 6 th	3-5 races scheduled	10:00	5

6.2 To alert boats that a race or sequence of races will begin soon, the orange starting line flag will be displayed with one sound at least five minutes before a warning signal is made.

6.5 On the last scheduled day of racing no warning signal will be made after 15:00.

7 CLASS FLAGS

7.1 The class flag is flag with 29er acronym.

8 RACING AREA

8.1 SI Addendum II shows the location of the racing areas.

9 COURSES

- 9.1 The diagram in SI Addendum III show the course, including the approximate angles between legs, the order in which marks are to be passed, and the side on which each mark is to be left. The approximate course length is 30 minutes for the first boat sailing the course

10 MARKS

- 10.1 Marks 1, 2S and 2P will be orange cylinder buoys. The starting marks will be the race committee vessels at the starboard end and the port end. The finishing marks will be the race committee vessel and a staff.
- 10.2 The following marks are rounding marks: 1, 2S and 2P.
- 10.3 New mark 1, as provided in SI 13, will be a yellow cylinder buoy.

11 OBSTRUCTIONS

- 11.1 Not in use.

12 THE START

- 12.1 Races will be started using RRS 26 with the warning signal made 5 minutes before the starting signal.
- 12.2 To alert boats that a race or sequence of races will begin soon, an orange flag will be displayed with one sound for at least five minutes before a warning signal is displayed.
- 12.3 The starting line is between a staff displaying an orange flag on the race committee signal vessel at the starboard end and the course side of the port-end starting mark.
- 12.4 A boat that does not start within 4 minutes after her starting signal will be scored Did Not Start without a hearing. This changes RRS A5.1 and A5.2.

13 CHANGE OF THE NEXT LEG OF THE COURSE

- 13.1 To change the next leg of the course, the race committee will lay a new mark or move the finishing line and remove the original mark as soon as practicable. When in a subsequent change a new mark is replaced, it will be replaced by an original mark.
- 13.2 Signal flag C together with repetitive sounds is a sufficient signal when changing position of the new mark. This changes RRS 33.
- 13.3 When changing the leeward leg, the Race Committee may move the original

marks (2S/2P) instead of using new marks.

- 13.4 If necessary, in order to improve the angle or distance between the gate marks (2S/2P), the Race Committee can adjust these marks without signalling a change of course.

14 THE FINISH

- 14.1 The finishing line is between a staff on the race committee vessel displaying a blue flag on the finishing mark at the starboard end and the course side of the port end finishing mark.

15 PENALTY SYSTEM

- 15.1 RRS 44.1 is changed so that the Two-Turns Penalty is replaced by the One-Turn Penalty.

16 TIME LIMITS AND TARGET TIMES

- 16.1 The Mark 1 Time Limit, Race Time Limit (see RRS 35), and the Finishing Window are shown in the table below.

Target Time	Race Time Limit	Finishing Window
30 minutes	60 minutes	15 minutes

- 16.2 The Finishing Window is the time for boats to finish after the first boat sails the course and finishes. Boats failing to finish within the Finishing Window, and not subsequently retiring, penalized or given redress, will be scored Time Limit Expired (TLE) without a hearing. A boat scored TLE shall be scored points for the finishing place two more than the points scored by the last boat that finished within the Finishing Window. This changes RRS 35, A5.1, A5.2 and A10.
- 16.4 Failure to meet the Target Time will not be grounds for redress. This changes RRS 62.1(a).

17 HEARING REQUESTS

- 17.1 The protest time limit is 60 minutes after the last boat finishes the last race of the day or the race committee signals no more racing today, whichever is later. The time will be posted on the official notice board.

- 17.2 Hearing request forms are available from the race office at the clubhouse.
- 17.3 Notices will be posted no later than 30 minutes after the protest time limit to inform competitors of hearings in which they are parties or named as witnesses. Hearings will be held in the protest room, located at the clubhouse, beginning at the time posted.

18 SCORING

- 18.1 One (1) race is required to be completed to constitute a series.
- 18.2 (a) When fewer than 3 races have been completed, a boat's series score is the total of her race scores.
- (b) When 3 to 7 races have been completed, a boat's series score will be the total of her race scores excluding her worst score.
- (c) When more than 7 races have been completed, a boat's series score is the total of her race scores excluding her 2 worst score.

19 SAFETY REGULATIONS

- 19.1 RRS 40.1 applies at all time the boat is afloat: Each participant shall wear personal flotation device except briefly while changing or adjusting clothing or personal equipment. Wet suits and dry suits are not personal flotation devices.
- 19.2 [DP][NP] A boat that retires from a race shall notify the race committee at the first reasonable opportunity.
- 19.3 The Race Committees radio channel in accordance with RRS 37 will be the VHF channel 77.

20 REPLACEMENT OF CREW OR EQUIPMENT

- 20.1 [DP][NP] Substitution of competitors is not allowed without prior written approval of the race committee.
- 20.2 [DP][NP] Substitution of damaged or lost equipment is not allowed unless authorized in writing by the race committee. Requests for substitution shall be made to the committee at the first reasonable opportunity, which may be after the race.

21 EQUIPMENT AND MEASUREMENT CHECKS

- 21.1 A boat or equipment may be inspected at any time for compliance with the class rules, notice of race and sailing instructions.

21.2 [DP, NP] When instructed by a race official on the water, a boat shall proceed to a designated area for inspection.

22 SUPPLIED BOATS

Not in use.

23 OFFICIAL VESSELS

23.1 Official vessels will display Royal Danish Yachtclub (KDY) flag

24 [DP] SUPPORT TEAMS

24.1 Team leaders, coaches and other support persons shall stay outside areas where boats are racing from the time of the preparatory signal for the first start until all boats have finished or retired or the race committee signals a postponement, general recall or abandonment.

24.3 Support person vessels shall be identified with country code.

25 TRASH DISPOSAL

25.1 Trash may be placed onshore in trash containers and offshore aboard official or support person vessels.

26 BERTHING

26.1 [DP] Boats shall be kept in their assigned places while in the boat park.

27 PRIZES

27.1 Prizes will be awarded as follows:

- Top 3 overall

28 RISK STATEMENT

28.1 RRS 3 states: 'The responsibility for a boat's decision to participate in a race or to continue to race is hers alone.' The organizing authority will not accept any liability for material damage or personal injury, or death sustained in conjunction with or prior to, during, or after the regatta.

29 INSURANCE

- 29.1 Each participating boat shall be insured with valid third-party liability insurance with a minimum cover of 2.000.000 EURO per incident or the equivalent.

Event Manager: Ann-Marie Mohr and Claus Ladefoged.

Race Officer: Peter S. Lübeck (IRO), KDY

Protest committee: Sven Solgaard Andersen (formand, NJ), Hans Friis, Ann Filippa Madsen,

SI ADDENDUM I

Prescription of the Danish Sailing Association national to RRS 1.2:

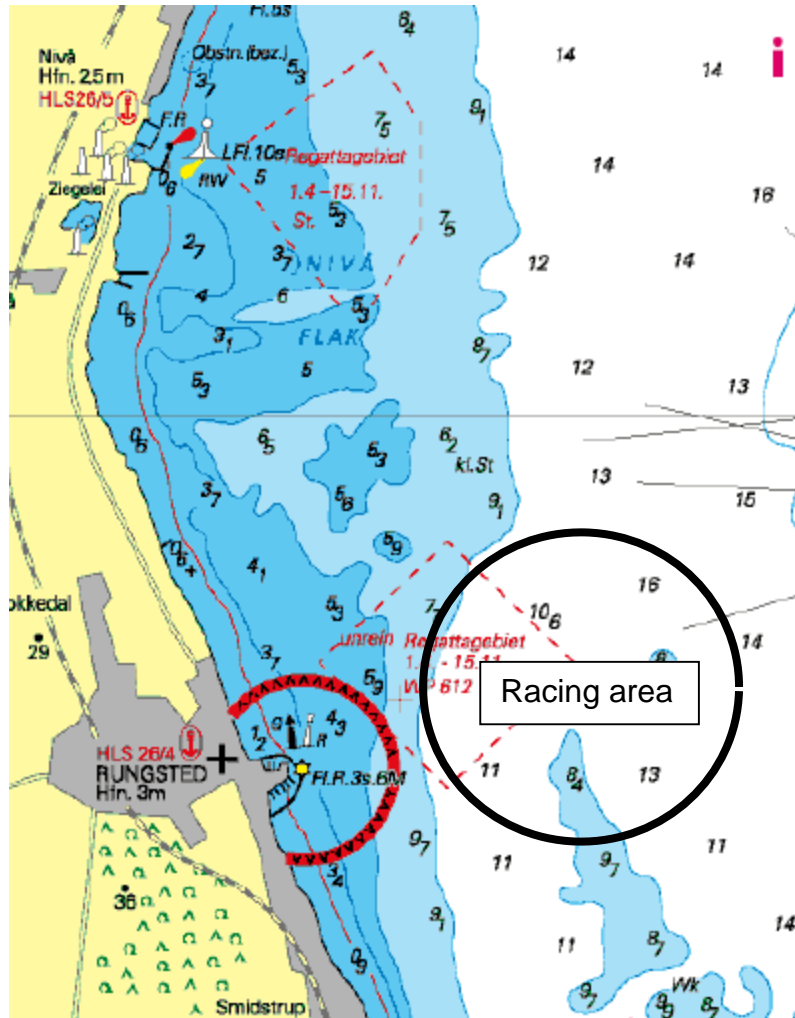
Danish legislation requires every boat to be equipped with personal buoyancy for the number of persons on board at any time.

Prescription of the Nordic Sailing Federation to RRS30:

When RRS 30.2, 30.3 or 30.4 apply, the base of the triangle mentioned in these rules shall be the starting line and the extension of the starting line to the starting vessel.

SI ADDENDUM II

Racing area



SI ADDENDUM III

Windward-Leeward Course

Start – 1 – 2S/2P – 1 – 2P – Finish

