



---

# J/80 World Championship 2021

## SAILING INSTRUCTIONS (SIs)

The notation '[NP]' in a rule of the sailing instructions (SIs) means that a boat may not protest another boat for breaking that rule. This changes RRS 60.1(a).

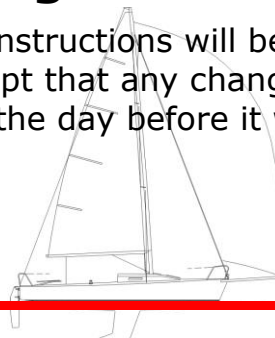
The notation '[DP]' in a rule of the SI and the NoR means that the penalty for a breach of that rule may, at the discretion of the protest committee, be less than disqualification.

### 1 Rules

- 1.1 The event is governed by the rules as defined in The Racing Rules of Sailing.
- 1.2 [DP]The Equipment Rules of Sailing will apply
- 1.3 RRS 44.1 is changed. See SI 15.1
- 1.4 National authority prescriptions that apply: Danish legislation require every boat to be equipped with personal buoyancy for the number of persons on board at any time.
- 1.5 The event will at all times obey the Danish government guidelines and Laws regarding the Corona virus. This may change the SI. Information about this will be provided on the website as it becomes available.
- 1.6 If there is a conflict between languages, the English text will take precedence.
- 1.7 In the event of a conflict between the Notice of Race and Sailing Instructions, the Sailing Instructions shall govern. This change RRS 63.7.

### 2 Changes to sailing instructions

- 2.1 Any change to the sailing instructions will be posted before 0900 on the day it will take effect, except that any change to the schedule of races will be posted by 2000 on the day before it will take effect.





---

### 3 Communicating with competitors

- 3.1 Notices to competitors will be posted on the official online notice board located at Manage2Sail <https://manage2sail.com/en-US/event/J80Worlds2021#!/>
- 3.2 The race office is located at The Royal Danish Yacht Club house, Rungsted Harbor, Rungsted Havn 46, DK 2960 Rungsted Kyst.
- 3.3 On the water, the race committee intends to monitor and communicate with competitors on VHF radio channel 77.
- 3.4 [DP][NP] From the first warning signal until the end of the last race of the day, except in an emergency, a boat shall not make voice or data transmissions and shall not receive voice or data communication that is not available to all boats.

### 4 Code of conduct

- 4.1 [DP] Competitors and support persons shall comply with reasonable requests from race officials.

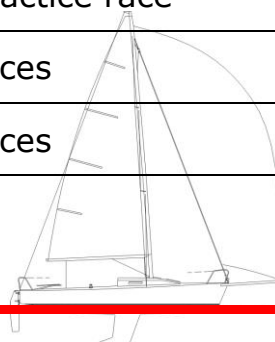
### 5 Signals made ashore

- 5.1 Signals made ashore will be displayed on the flag pole east of the club house.
- 5.2 When flag AP is displayed ashore, '1 minute' is replaced with 'not less than 60 minutes' in Race Signals AP.

### 6 Schedule of races

- 6.1 Race Schedule

Day	Schedule	First warning
July 4 <sup>th</sup>	1 practice race	15:00
July 5 <sup>th</sup>	3 races	10:55
July 6 <sup>th</sup>	3 races	10:55





---

July 7 <sup>th</sup>	3 races	10:55
July 8 <sup>th</sup>	3 races	10:55
July 9 <sup>th</sup>	3 races	10:55

A maximum of 15 races are scheduled (excluding practice race).

- 6.2 Races not sailed on the scheduled day may be sailed on the following day at the discretion of the race committee. A change will be announced according to SI 2.1.
- 6.3 To alert boats that a race or sequence of races will begin soon, the orange starting line flag will be displayed with one sound at least five minutes before a warning signal is made.
- 6.4 On the last scheduled day of racing no warning signal will be made after 15:00.

## 7 Class flags

- 7.1 The J/80 Class flag is the J/80 logo in white on blue background.

## 8 Racing area

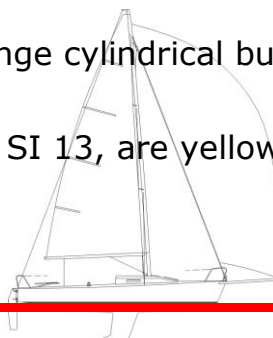
- 8.1 SI Addendum 1 shows the location of the racing area.

## 9 Courses

- 9.1 The diagrams in SI Addendum 2 shows the course, including the approximate angles between legs, the order in which marks are to be passed, and the side on which each mark is to be left.
- 9.2 No later than the warning signal, the race committee signal vessel will display the approximate compass bearing of the first leg.

## 10 Marks

- 10.1 Marks 1 and 2s/2b are orange cylindrical buoys. The Offset mark 1a is a buoy with an orange flag.
- 10.2 New marks, as provided in SI 13, are yellow cylindrical buoys.





---

## 11 Obstructions

11.1 Not in use.

## 12 The start

12.1 Races will be started using RRS 26.

12.2 The starting line is between staffs displaying orange flags on the starting mark.

12.3 As a courtesy, the port end race committee boat will display the visual start signal flags and recall signal flags concurrently with the race committee signal boat. Any improper action or omission of the port end race committee boat in connection with the display of such flags shall not be grounds for redress. This changes RRS 62.

12.3 A boat that does not start within 4 minutes after her starting signal will be scored Did Not Start without a hearing. This changes RRS A5.1 and A5.2.

## 13 Change of the next leg of the course

13.1 To change the next leg of the course, the race committee will lay a new mark (or move the finishing line) and remove the original mark as soon as practicable. When in a subsequent change a new mark is replaced, it will be replaced by an original mark.

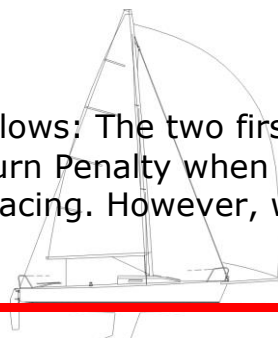
13.2 If a course change affected a windward mark with an associated mark 1A, mark 1A will not be laid so that there is no mark 1A after the course change.

## 14 The finish

14.1 The finishing line will be between the finishing mark buoy with blue flag on port end and a blue flag on the finishing race committee boat on starboard end.

## 15 Penalty system

15.1 RRS 44.1 is changed as follows: The two first sentences are changed to; "A boat may take a One-Turn Penalty when she may have broken a rule of Part 2 or RRS 31 while racing. However, when she may have broken a





---

rule of Part 2 while in the zone around a mark other than a starting mark, her penalty shall be a Two-Turns Penalty.”

- 15.2 Unless the course is shortened to finish at the windward mark, penalties while in the zone of the windward mark or the offset leg shall be delayed and taken at the first reasonable opportunity on the downwind leg. This changes RRS 44.2.
- 15.3 Decisions of the international jury will be final as provided in RRS 70.5.

## 16 Time limits and target times

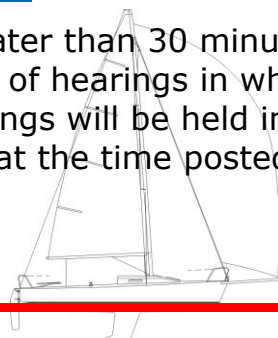
- 16.1 The Target Time, Race Time Limit (see RRS 35), and the Finishing Window are shown in the table below.

Target Time Mark 1	Target Time	Race Time Limit	Finishing Window
30 minutes	60 minutes	90 minutes	20 minutes

- 16.2 The Finishing Window is the time for boats to finish after the first boat sails the course and finishes. Boats failing to finish within the Finish Window (the time after the first boat sails the course and finishes) will be scored Did Not Finish without a hearing. This changes RRS 35, A5.1 and A5.2.
- 16.3 Failure to meet the Target Time will not be grounds for redress. This changes RRS 62.1(a).

## 17 Hearing requests

- 17.1 The protest time limit is 60 minutes after the last boat finishes the last race of the day or the race committee signals no more racing today, whichever is later. The time will be posted on the official notice board.
- 17.2 Hearing request forms are available from the race office in the club house or at Manage2Sail <https://manage2sail.com/en-US/event/J80Worlds2021#!/>
- 17.3 Notices will be posted no later than 30 minutes after the protest time limit to inform competitors of hearings in which they are parties or named as witnesses. Hearings will be held in the protest room, located at the club house, beginning at the time posted on the notice board.





- 
- 17.4 Breaches of SI 3.4, 19, 21.2, 24, and 28 will not be eligible for a hearing request/protest by a boat. This changes RRS 60.1(a). Penalty for breaking these rules might be less than disqualification if decided by the protest committee.
- 17.5 An International Jury will be appointed in accordance with RRS Appendix N. The right of appeal from a protest committee decision is denied as provided in rule 70.5.

## 18 Scoring

- 18.1 3 races are required to be completed to constitute a World championship-series.
- 18.2
- When fewer than 6 races have been completed, a boat's series score is the total of her race scores.
  - When 6 or more races have been completed, a boat's series score is the total of her race scores excluding her worst score.

## 19 Safety regulations

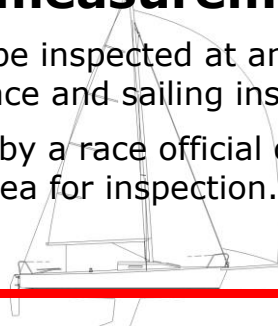
- 19.1 [DP][NP] A boat that retires from a race shall notify the race committee at the first reasonable opportunity.

## 20 Replacement of crew or equipment

- 20.1 [DP] Substitution of competitors is not allowed without prior written approval of the Race Committee.
- 20.2 [DP] Substitution of damaged or lost equipment is not allowed unless authorized in writing by the Technical Committee. Requests for substitution shall be made to the committee at the first reasonable opportunity, which may be after the race.

## 21 Equipment and measurement checks

- 21.1 A boat or equipment may be inspected at any time for compliance with the class rules, notice of race and sailing instructions.
- 21.2 [DP][NP] When instructed by a race official on the water, a boat shall proceed to a designated area for inspection.





---

## 22 Event advertising

22.1 Boats shall display event advertising supplied by the organizing authority. The organizing authority will supply the instructions for their use. If this rule is broken, World Sailing Regulation 20.9.2 applies.

## 23 Official vessels

23.1 Official vessels will be identified as follows: Carrying a Royal Danish Yacht Club (KDY) flag.

## 24 [DP][NP] Support teams

- 24.1 Team leaders, coaches and other support persons shall stay outside areas where boats are racing from the time of the preparatory signal for the first start until all boats have finished or retired or the race committee signals a postponement, general recall or abandonment.
- 24.2 Support boats must, if the race committee displace flag V with one sound, listen to VHF radio channel 77 and follow the directions by the race committee for emergency support. See RRS 37.
- 24.3 Support and Coach Boats shall be registered at the Race Office before the beginning of the regatta and comply with the Support Boat Regulation for the regatta. See SI ADDENDUM III.
- 24.4 The Support and Coach vessels shall be identified with national code.

## 25 Trash disposal

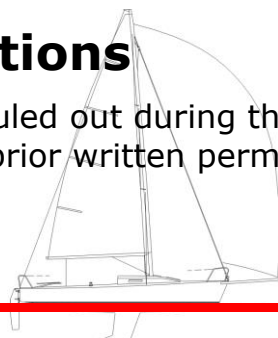
25.1 [DP] Trash may be placed onshore in trash containers and offshore aboard official or support person vessels.

## 26 Berthing

26.1 [DP] Boats shall be kept in their assigned places while in the harbour.

## 27 Haul-out restrictions

27.1 [DP] Boats shall not be hauled out during the event except with and according to the terms of prior written permission of the race committee.





---

## 28 [DP][NP] Diving equipment and plastic pools

- 28.1 Underwater breathing apparatus and plastic pools or their equivalent shall not be used around keelboats between the preparatory signal of the first race and the end of the last race of the event.
- 28.2 Keelboats shall not be cleaned below the waterline by any means during the event from July 5<sup>th</sup> at 9:00 until July 9<sup>th</sup> at 16:00.

## 29 Prizes

29.1 Following prizes will be awarded:

- J/80 World Champion 2021 - Overall
- J/80 World Champion 2021 – all women crew
- J/80 World Champion 2021 – Youth – Skipper and two crew members must be under 25 years of age during all race days
- J/80 World Champion 2021 – Masters – average age of the crew must be 46 years or over by the first race day
- J/80 World Champion 2021 – Mixed crew – at least half of the crew must be women
- J/80 World Champion 2021 – Corinthian – the whole crew must be in Group 1 of the World Sailing Code, for which the World Sailing certificate must be shown as proof
- J/80 World Champion 2021 – Over 60 – Skipper must be over 60 years of age by the first race day.

## 30 Risk statement and disclaimer of liability

30.1 Competitors participate in the regatta entirely at their own risk. See RRS 3 (Decision to race) and RRS 4 (Acceptance of the rules). The organizing authority will not accept any liability for material damage or personal injury, or death sustained in conjunction with or prior to, during, or after the regatta.







---

## 31 Insurance

31.1 Each participating boat shall be insured with valid third-party liability insurance with a minimum cover of 1.500.000 € per incident or the equivalent.

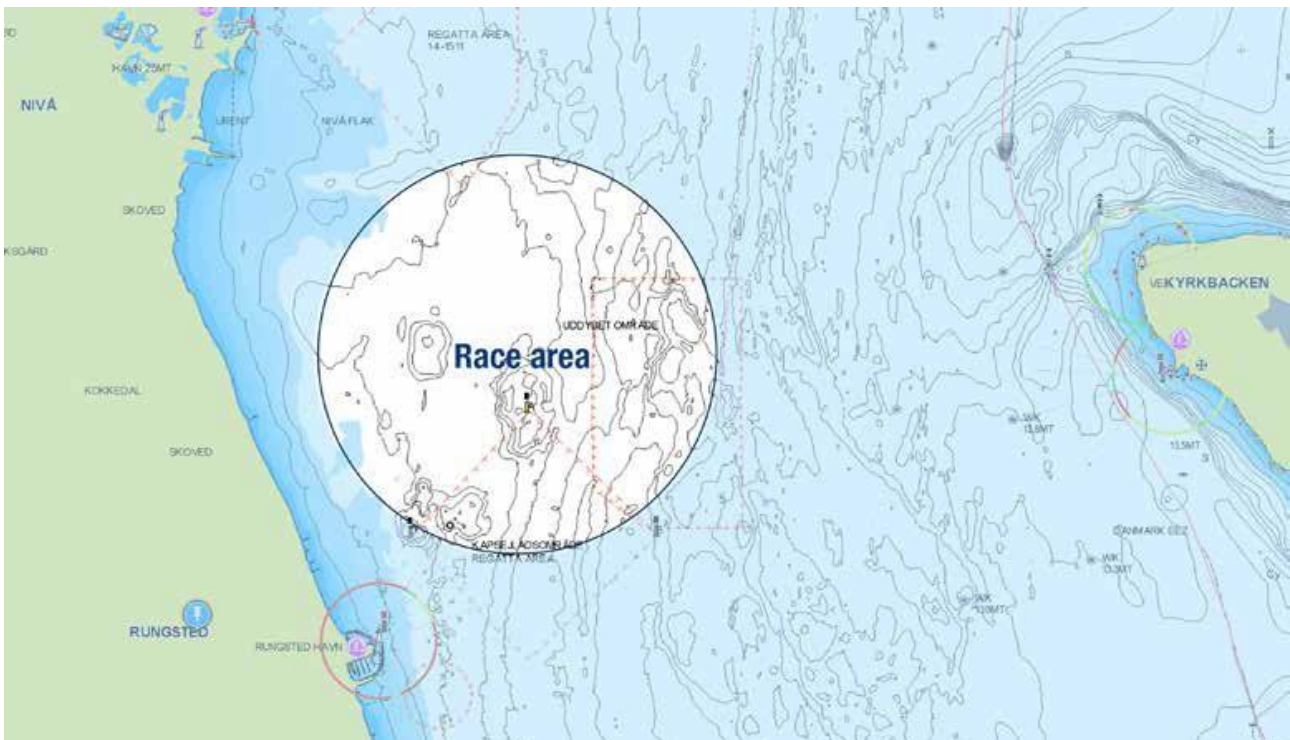




---

## SI Addendum I

Race area North East of Rungsted Harbour.



---

Version: 0.01

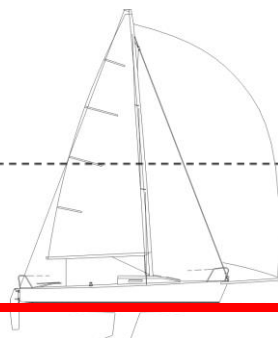
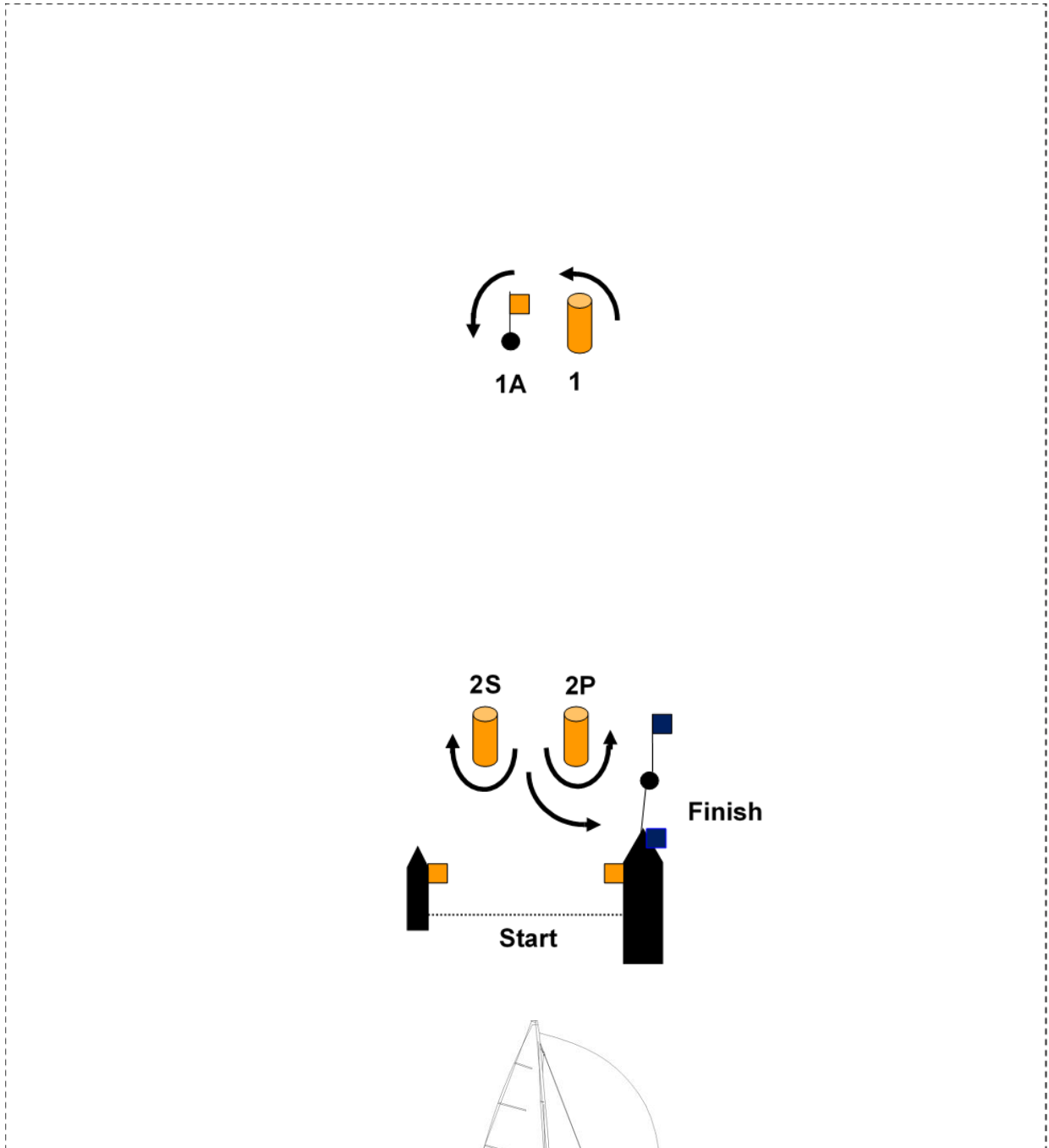
Last update: 2021-06-26

---

## SI ADDENDUM II

### Course description

Start – 1 – 1A – 2S/2P – 1 – 1A – 2P – Finish





---

## SI ADDENDUM III

### Support boats

#### Support Boats shall carry the following Equipment on board

- Life jackets / buoyance aids for the driver and all passengers
- Safety lanyard / automatic engine immobiliser
- VHF radio capable of receiving instruction from Safety or Race Committee
- Device for making a sound signal (e.g. Whistle)
- Tow rope (minimum 15m long and 10mm thick)
- Knife

#### Support Boat Regulations

- Support Boats shall be registered at the Race Office who will hand out marking to be carried clearly displayed on the boat.
- Support Boats shall comply with local regulations and speed limits
- Support Boats shall follow Race Committee instructions on the designated VHF channel
- Safety lanyards shall be worn at all times when the engine is running
- Life jackets / buoyance aids shall be worn at all times when afloat according to norwegian regulations
- Support boats shall:
  - Not be in way of any boats racing or in start/finish area. Safety distance atleast 50 meters
  - Keep clear of any mark of the course by at least 50 meters while boats are in the vicinity of mark
  - Not produce waves that can influence the racing boats.
  - Show overall considerations for all boats part of the race or organizing committee.

